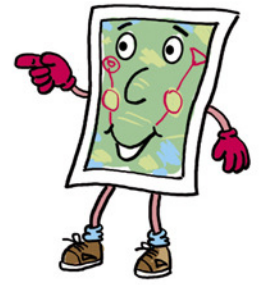


Orienteering is a challenging outdoor adventure sport enjoyed by people of all ages, abilities and backgrounds.



Orienteering

Come and 'Have a Go' HERE



East Park, Hull

Saturday 23rd June 2012

'Starts' are from 1pm to 3pm

Registration and Start/Finish
in front of the Pavilion Cafe

Juniors - £1; Adults - £2
Coaching available

Courses can be run by individuals or in groups and are suitable for all levels of fitness and ability.

The shortest course is all on hard surfaces and is suitable for wheelchair users.

Please come prepared for the weather.



Further details at
www.halo-orienteering.org.uk

